

PIXMA MP830 and MP530 All-in-One Office Printers

Canon

advanced simplicity®



**Versatile All-in-Ones with all the quality, speed and convenience
your business needs. Print, copy, scan, fax.**

Take productivity to a whole new level with these fast, efficient and reliable All-in-Ones. Ideal for the small/home office, these new PIXMA All-in-Ones give you the professional quality, speed and convenience your office needs, allowing you to save valuable time and money.



INCREASE PRODUCTIVITY – THE EASY WAY

- Save paper and money with the Automatic Duplex Unit which allows you to print onto both sides of the page.
- The Automatic Document Feeder (ADF) allows you to copy, scan or fax multiple documents automatically. The MP830 features an Auto Duplex ADF which can automatically copy and scan double-sided documents² – saving you time as you don't have to manually turn over the documents yourself.
- The dual paper-path lets you load paper from both the Automatic Sheet Feeder (ASF) and the front cassette. Not only does this allow for a huge 300 page plain paper capacity, it is also perfect for switching between paper sizes and types without having to re-load each time.



Auto Duplex Unit for double-sided printing



Auto Duplex ADF (MP830 only) for double-sided copying and scanning



- Scan or copy bulky items (such as books and magazines) using the Advanced Z-Lid which lifts up parallel to the platen glass.

Advanced Z-Lid copies and scans bulky items with ease

FAST, FEATURE-PACKED AND COST-EFFICIENT PRINTING

- The MP830 prints documents at up to 30 ppm black and 24 ppm colour, while the MP530 prints at up to 29 ppm black and 19 ppm colour³
- Ultra-sharp 1 picolitre FINE technology⁴ combines with 9600 x 2400 dpi⁵ to give you superb quality photos and documents.

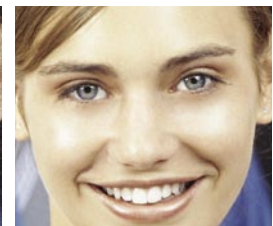


Image simulation

1 picolitre FINE technology eliminates graininess to produce razor-sharp images



Individual Ink Tanks

- The ContrastPLUS 5-colour individual ink system gives your photos greater contrast and keeps running costs low – only replace the ink that runs out.
- Design and print customised CD/DVD labels using your own photos, graphics and titles. Alternatively, you can print thumbnail images onto your CD/DVD so you can view its contents at a glance.
- Print lab quality borderless 6" x 4" photos in approximately 36 seconds with the MP830 and 51 seconds with the MP530³
- Print photos directly from compatible digital cameras using PictBridge technology – the industry standard for direct printing⁶
- With the combination of genuine Canon ChromaLife100 ink and selected Canon photo papers, your photos can maintain all their vibrancy and colour for 100 years!



CD/DVD Label Printing

HIGH SPEED, CONVENIENT, STANDALONE COPYING

- The MP830 copies documents at up to 29 ppm black and 24 ppm colour, while the MP530 copies at up to 28 ppm black and 19 ppm colour.⁷
- With 4-on-1 copy you can reduce four A4 documents onto one A4 page to minimise paper wastage and save money.
- Auto Exposure (Auto Intensity) Copy automatically analyses the content of the document and, if it is black text, raises the density and contrast before copying.



4-on-1 Copying

*Auto Exposure (Auto Intensity) copy cannot be made when using ADF.



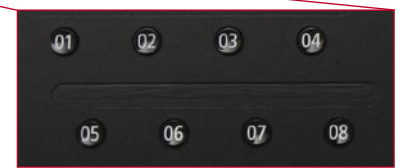
Multi-crop (featured in ScanGear MP Ver. 11.2)

VERSATILE SCANNING

- ADF scanning gives you the power to scan multiple documents continuously and create batch PDFs.
- There is no need to worry about misplaced documents as these All-in-Ones can automatically judge character direction and correct skewed documents.
- Multi-crop lets you select up to 10 different areas within one preview. You can adjust the scan settings for each and then in one scan, create separate files for each selected area.

SUPER FAST AND SUPER SMART FAXING

- Super G3 ensures high-speed transmissions of around 3 seconds per A4 page.
- With Transmission/Reception Memory there's no need to worry if you run out of ink while receiving a fax. The MP830 can store up to 250 pages and the MP530 can store up to 150 pages, so no important documents are lost⁸.
- The MP830 features One-Touch Speed Dialling so you can register 8 fax numbers and assign each to a number on the control panel.
- Both models feature Coded-Speed Dialling so you can register up to 100 numbers with the MP830 and up to 40 numbers with the MP530.



One-Touch Speed Dialling (MP830 only)



EASY-TO-USE SOFTWARE

- **Easy-PhotoPrint** is a user-friendly application for printing out digital photos, retouching portraits and lab quality trimming.
- **CD-LabelPrint** allows you to layout label designs and print them directly onto printable CDs and DVDs.
- **Easy-WebPrint[†]** eliminates waste and frustration by automatically adjusting the size of a web page to ensure it fits perfectly onto the printed page⁹.
- **Other included software** – ScanSoft[®] OmniPage[®] SE, NewSoft Presto! Page Manager.



Easy-PhotoPrint – Simple 3 step process

[†]Windows only.

OTHER FEATURES – MP830 ONLY

- The Dual CCD allows for both high resolution scanning (2400 dpi) and high speed copying (600 dpi).
- With Card Direct you can print photos directly from compatible memory cards¹⁰.
- The huge 2.5" colour LCD screen allows you to view, edit and print the photos on your memory card without a computer.



2.5" LCD Screen



CD/DVD Label Copy

- CD/DVD Label Copy allows you to copy existing labels onto printable surface CD/DVDs – no computer required.
- With CD/DVD Direct Print you can print photos stored on your memory card directly onto printable surface CD/DVDs.



Card Direct Printing

Want to know more? Visit canon.com.au

PIXMA MP830 & MP530 SPECIFICATIONS




	PIXMA MP830 All-in-One Office Printer	PIXMA MP530 All-in-One Office Printer
PRINTER FUNCTIONS		
Printing Speed⁵	Monochrome: approx. 30 ppm [†] Colour graphics: approx. 24 ppm ^{††} Photo Paper Plus Glossy (6" x 4" image on PP-101 in standard mode): approx. 36 secs borderless ^{†††}	Monochrome: approx. 29 ppm [†] Colour graphics: approx. 19 ppm ^{††} Photo Paper Plus Glossy (6" x 4" image on PP-101 in standard mode): approx. 51 secs borderless ^{†††}
Printing Resolution⁵	Up to 9600 x 2400 dpi	
Borderless Printing	A4, 5" x 7", 6" x 4", Credit Card size (54mm x 86mm)	
Ink Tanks	PGI-5Bk – black ink tank CLI-8C/M/Y/Bk – individual ink tanks	
Ink Yield[*]	Borderless 6"x4" photo: CLI-8C – approx. 390, CLI-8M – approx. 250, CLI-8Y – approx. 280, CLI-8Bk – approx. 1100	Borderless 6"x4" photo: CLI-8C – approx. 430, CLI-8M – approx. 290, CLI-8Y – approx. 310, CLI-8Bk – approx. 1650
Paper Capacity	300 sheets (ASF + Paper Cassette)	
Paper Size	A4, A5, B5, Letter, Legal, Envelopes (DL, Com. #10), 5" x 7", 6" x 4", Credit Card (54mm x 86mm)	
Media Weight	Plain Paper: 64–105g/m ² , Canon specialty paper (max weight): approx. 273g/m ² (Photo Paper Plus Double Sided)	
COPIER FUNCTIONS		
Colour Copy	Yes	
Image Quality	3 positions: Fast, Standard, High	
Density Adjustment	9 positions, Auto Intensity (Auto Exposure copy)	
Copy Speed⁷	Mono: 29 cpm. Colour: 24 cpm	Mono: 28 cpm. Colour: 19 cpm
Multiple Copy	Up to 99 copies	
Reduction/Enlargement	25% to 400%	
Special Copy Functions	Fit-to-page, Duplex (plain paper only), Borderless, 4-on-1, 2-on-1, Sticker, Image Repeat, Fading Correction, Sort, CD/DVD Label	Fit-to-page, Duplex (plain paper only), Borderless, 4-on-1, 2-on-1, Sticker, Image Repeat, Sort
SCANNER FUNCTIONS		
Scanner Type	Flatbed & ADF Colour Scanner by CCD (Charge Coupled Device)	Flatbed & ADF Colour Scanner by CIS
Scanner Resolution	Flatbed: 2400 x 4800 dpi (19200 x 19200 dpi driver optimised) ADF: 600 x 600 dpi (19200 x 19200 dpi driver optimised)	Flatbed: 1200 x 2400 dpi (19200 x 19200 dpi driver optimised) ADF: 600 x 600 dpi (19200 x 19200 dpi driver optimised)
Colour Scanning Depth	48 bit input and 24 bit output	
Special Scan Functions	Multi-photo mode, Scan-to-PDF, Photograph corrections (Fading correction, Grain correction, Reduce Dust & Scratches, Backlight correction), Descreen, Unsharp Mask	
FAX FUNCTIONS		
Transmission Speed	Mono: approx. 3 secs per page Colour: approx. 80 secs per page (based on Canon Colour Test sheet)	
Modem Speed	Super G3 33.6 Kbps	
PC Fax	Yes (B&W transmission only)	
Compression Method	Mono: MH, MR, MMR Colour: JPEG	
Fax Memory⁸	Approx. 250 pages	Approx. 150 pages
Speed Dials	One touch: 8 locations. Coded dials: 100 locations	Coded dials: 40 locations
Group Dialling	Max. 107 locations	N/A
Other Features	Auto FAX/TEL Switching, Answering Machine connection, Memory transmission, Remote Reception	
ADF		
Paper Handling (plain paper)	A4: 35	A4: 30
Auto Duplex ADF²	A4	N/A
Copy	Sort, 2in1, 4in1, 1to1 sided, 1to2 sided, 2to2 sided, 2to1 sided	Sort, 2in1, 4in1, 1to1 sided, 1to2 sided
PC INTERFACE & SOFTWARE		
Interface Type	PC: USB 2.0 Hi-Speed ^{††} Camera Direct: Direct Print Port (PictBridge / Bubble Jet Direct) [†]	
Supported OS	Windows XP SP1, SP2/Windows 2000 Professional SP2, SP3, SP4/Windows ME/Windows 98, 98 Second Edition and Mac OS X v.10.2.4 – v.10.4	Windows XP SP1, SP2/Windows 2000 Professional SP2, SP3, SP4/Windows ME/Windows 98, 98 Second Edition and Mac OS X v.10.2.8 – v.10.4
Software Included	Easy-PhotoPrint, Easy-WebPrint ⁹ , CD-LabelPrint, ScanSoft OmniPage SE, NewSoft Presto! PageManager	
GENERAL FEATURES		
Weight	14.7kg	12.8kg
Dimensions (WxDxH)	500 x 487 x 292 mm (minimum dimensions with paper trays and other extensions closed)	468 x 467 x 263 mm (minimum dimensions with paper trays and other extensions closed)
Power Source	AC 120 – 240V, 50 – 60Hz	AC 110 – 240V, 50 – 60Hz
Power Consumption	Max: 25W (copying). Standby: 4W	Max: 22W (copying). Standby: 3.9W
Included as Standard	PIXMA MP830 All-in-One Office printer, 5 individual ink tanks (PGI-5Bk, CLI-8C, CLI-8M, CLI-8Y, CLI-8Bk), Print-head, Power Cord, Phone Cord, CD-R Tray, Set-up and Software CD-ROM, Printed Manual	PIXMA MP530 All-in-One Office printer, 5 individual ink tanks (PGI-5Bk, CLI-8C, CLI-8M, CLI-8Y, CLI-8Bk), Print-head, Power Cord, Phone Cord, CD-R Tray, Set-up and Software CD-ROM, Printed Manual

* Ink yield calculation is based on printing Canon 24 standard digital images on Photo Paper Plus Glossy (6" x 4" borderless print) with default settings in Windows®XP driver. The figure above is an average value, measured when printing continuously using the ink immediately after it is unsealed, until the ink is out. Ink yield may vary depending on photos printed, applications software used, print mode and type of paper used. This should be used as a guide only and does not take into account ink that might be used for head cleaning or head refreshing to maintain printer performance. Please visit our website for further details.

- Up to 100 Years' Life in a Photo Album when printed with ChromaLife 100 ink on selected Canon photo papers. Kept in a photo album, shut out light and air (gas), temperature 23 degrees and 50% humidity. Predicted value from the accelerated test. Result may vary based on individual environmental factors. For more information, please visit canon.com.au/ChromaLife100
- Double-sided documents are supported in A4/Letter size only. Sending faxes of double-sided documents is not supported.
- PPM print speeds are based on the highest speed printer driver mode. Photo print speed is based on the default mode driver setting using Canon Photo Paper Plus Glossy paper. Print speed may vary depending on system configuration, interface, software, image/document complexity, print mode, page coverage, type of paper used and does not take into account data processing time on host computer.
- Minimum ink droplet size.
- Ink droplets can be placed with a horizontal pitch of 1/9600 inch at minimum.
- PictBridge camera direct and Bubble Jet Direct printing requires PictBridge or Bubble Jet Direct compatible digital cameras in order to function. Check with your digital camera manufacturer or users guide to determine PictBridge or Bubble Jet Direct compatibility.
- CPM copy speeds based on fast mode setting using plain paper. Copy speed may vary depending on document complexity, copy mode, page coverage and the number of copies.

- Maximum document capacity when receiving Canon Standard Chart for FAX transmission.
 - Easy-WebPrint requires Microsoft Internet Explorer version 5.5, version 6.0 recommended.
 - Compatible memory cards include CompactFlash[®], Microdrive, SmartMedia[®], Memory Stick[®], Memory Stick PRO[®], SD Card[™] and MultimediaCard[™]: xD-Picture Card[™], Memory Stick Duo[™], Memory Stick Pro Duo[™] and miniSD Card can be used with the addition of a special adaptor sold separately – ask your memory card supplier.
 - USB 2.0 Hi-speed performance requires Windows XP with Service Pack 1 or Windows 2000 with Service Pack 4 with pre-installed USB 2.0 High-speed port.
- All specifications may change without notice.

PRINT SPEED GUIDES

		
† Black Text A4	†† Text & Colour Graphics A4	††† Photo 6" x 4"



The 1 year warranty can be upgraded to 3 years for a minimal cost and is backed by Canon's Customer Care Info-Line support. Driver updates and Technical Support are also available from our websites – canon.com.au or canon.co.nz

Canon Australia Pty. Ltd.
Freecall: 1800 021 167
Facsimile No: + 61 2 9805 2632

Canon New Zealand Limited
Freecall: 0800 222 666
Facsimile No: + 64 9 489 0380

canon.com.au
canon.co.nz
canon.com.au/digitalimage

Canon is a registered trademark of Canon Inc. and 'advanced simplicity' is a registered trademark of Canon Australia Pty Limited. PIXMA and the PIXMA logo are trademarks of Canon Inc. Microsoft, Windows and the Windows logo are registered trademarks of Microsoft Corporation in the United States and in other countries. All other trademarks are the property of their respective owners.

