

# MAX INTERIORS



## CARE Waitakere Trust unveil their new premises with state-of-the-art furniture fit-out

**CARE Waitakere Trust is an organisation based in West Auckland that provides professional counselling services to local community members needing support.**

In early 2023, CARE Waitakere Trust planned to move to new premises in Henderson and required a complete furniture setup.

They engaged GHD Design to manage the project, including finding a suitable vendor to plan, quote, procure and install the fit-out.

GHD Design trusted OfficeMax to execute the project as they had collaborated with Craig Etwell, Specialist Sales – Interiors, on projects in the past.

### Results at a glance



#### Perfect fit-out

Provided a complete solution, from acoustic panels to privacy booth and tab scheduler, for a seamless meeting room experience.



#### Showroom visits a win-win

Showroom tours gave a first-hand experience of the furniture selected and trying new items.



#### Quality within budget

A compact budget did not compromise the quality of the fit-out.



#### Managed multiple stakeholders

Accomplished the project seamlessly, coordinating with suppliers, GHD Design, and other parties.



#### Delivered on timeline

From proposal to showroom tours to installation – all stages were completed close to the client's timeline.

LET'S GET IT DONE

## The Challenge

- **Drawing on a new canvas:** Designing the space from scratch with a wide range of furniture, a unique setup from each room and selecting a colour scheme that is warm and welcoming.
- **Specified timeline:** A vast and complex project that GHD Design and OfficeMax had to deliver per CARE Waitakere's committed move-in date for the premises.
- **Fit within budget:** Select the best fit-out options for the space within the allocated budget without compromising the quality.

## The Solution

We understood the project's complexity and that the timeline of each stage was crucial to its success, so the tasks were meticulously planned and scheduled.

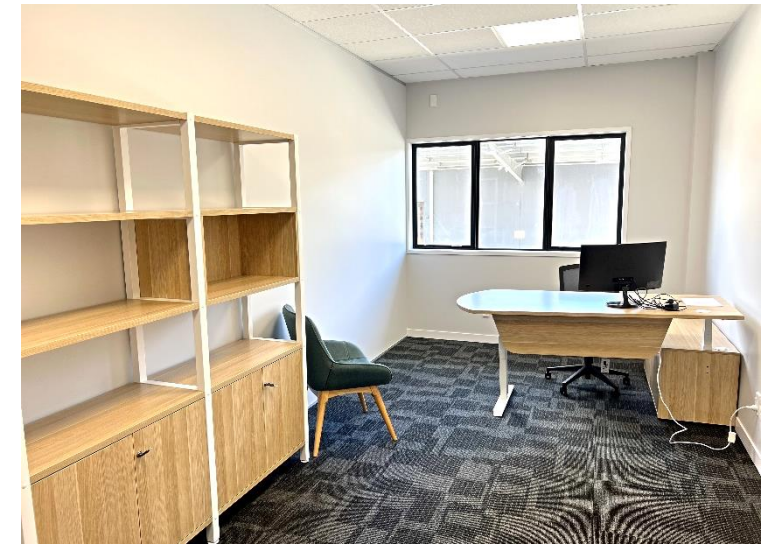
We ensured all parties were kept in the loop throughout each process stage, which included submitting proposals, showroom visits, arranging material samples, finalisation, and installation.

"We communicated our needs to GHD Design and OfficeMax. We were delighted to see how well they were prepared with design, layout and the furniture fit-out options aligned with our requirements."

**- Kathy Clist, CEO/Clinical Manager, CARE Waitakere Trust**

### Showroom visit:

- **Executive Workstation:** The client was instantly impressed with the Switch Electric Executive Workstation that could adjust the height, integrated storage system and a modesty panel. This was a straight yes from the CEO.
- **Block Reception Counter:** The clients were shown the reception counter at the Highbrook office entrance and instantly liked it. The Block Reception unit has a counter front, is contemporary styled and has wheelchair access.
- **Fabric selection:** Different fabric options and colour combinations were brought in to demonstrate their texture



and match their specific brand and tone requirements, as well as ensure fabrics were available in sufficient quantities. 13 different fabrics were selected for the fitout.

"The showroom tour in Highbrook gave us a better understanding of our selections. We tried other furniture items, including the height-adjustable executive workstation, which was quite innovative and an excellent addition to our workplace."

**- Kathy Clist, CEO/Clinical Manager, CARE Waitakere Trust**

LET'S GET  
IT DONE

officemax.co.nz

0800 426 473

 OfficeMax®

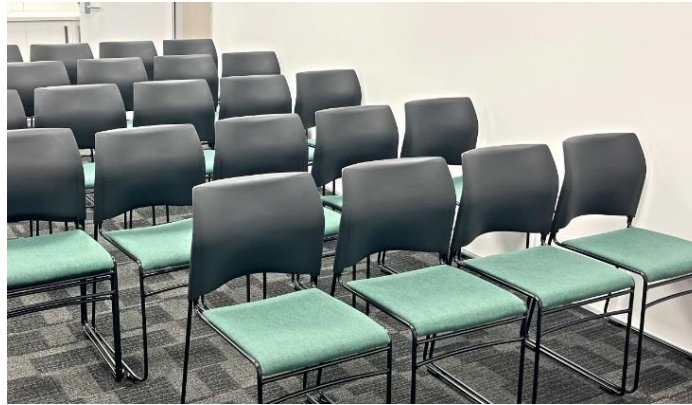
## Final selection:

Besides selecting the Executive Workstation and Block Reception Counter during the showroom visit - the final order included:

- 37 Frankie Armchairs, including the bolster for each armchair.
- 12 Neo Reception Chairs in two different fabrics were selected because of the generous sizing of the chair.
- Twenty-five pieces of Custom Modular Seating covered in multiple fabrics.

"GHD Design and OfficeMax made the process easy for us, from the proposal stage to selection and installation. It was a complex project with a firm timeline, and they delivered it with professionalism and courtesy. If we were to do another project, I could trust them with it completely."

**- Kathy Clist, CEO/Clinical Manager, CARE Waitakere Trust**



LET'S GET  
IT DONE

[officemax.co.nz](http://officemax.co.nz)

0800 426 473

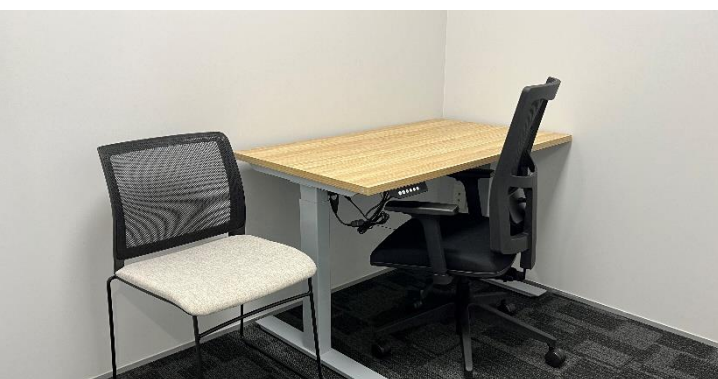
 **OfficeMax**<sup>®</sup>

## The Results

- The fit-out brought a state-of-the-art look to their newly opened counselling and office spaces with a selection of colourful, custom-made comfortable chairs, sofas, lounges, and tables.
- The showroom visits allowed product demonstrations, viewing the pre-selected products in person and selecting from a broader range of furniture options showcased.
- Turned a complex project with multiple stakeholders into a smooth operation and delivered through meticulous planning and without any concerns from the client.
- The target date was accomplished, and the space was ready to open for the public as per CARE Waitakere's schedule.

"Our staff love the look of our new premises. They commend our furniture selection, colour scheme, and complete setup. The fit-outs are comfortable and complement the warm environment we've created here. We've received some amazing feedback from our clients as well."

**- Kathy Clist, CEO/Clinical Manager,  
CARE Waitakere Trust**



**Create a space  
where your people  
will thrive. Get in  
touch today.**

**officemax.co.nz  
/furniture**

**0800 426 473**

**LET'S GET  
IT DONE**

**officemax.co.nz**

**0800 426 473**

 **OfficeMax®**