


# UP300

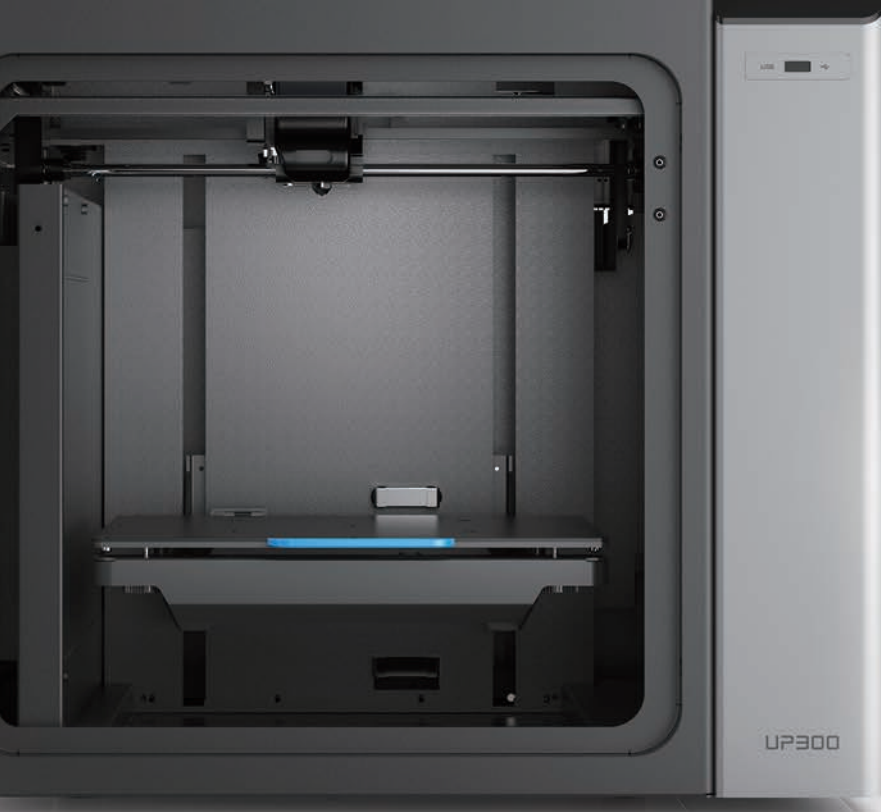
Versatility with Precision



- ▶ Three Material-Specific Print Heads
- ▶ Double-Sided Interchangeable Build Plates
- ▶ Dual Filtration System
- ▶ Compatibility with Tiertime Print Queue



Find us on 



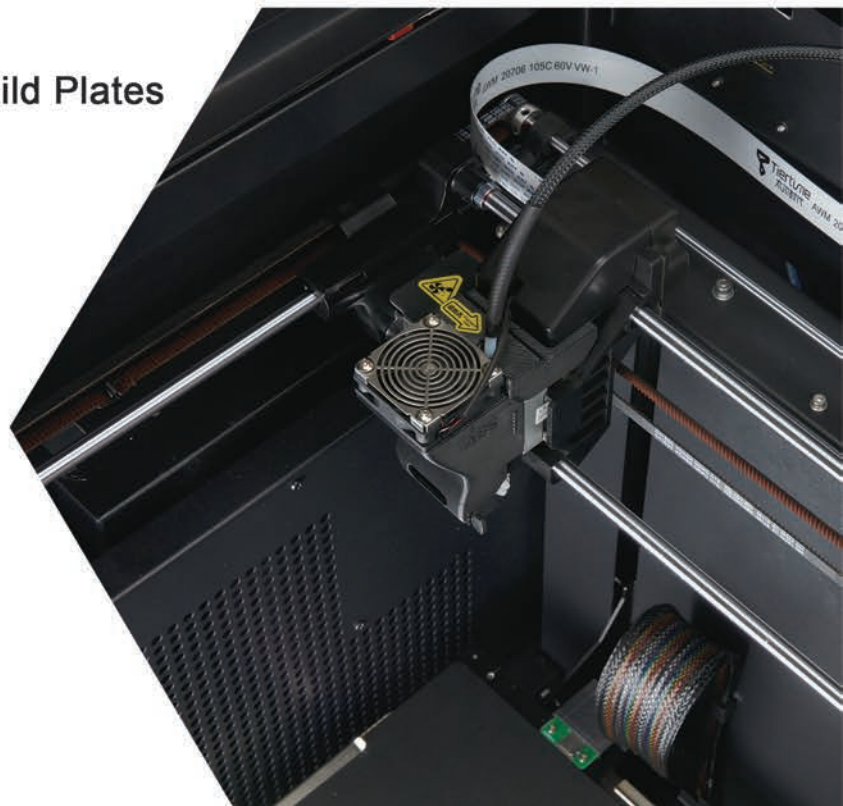
New for 2018, the UP300 is targeted for users demanding a large build volume and consistent performance across different materials. It combines new innovations and improved, popular UP features with Tiertime's renowned reliability.

### Three Separate Extruders - Optimized for Different Materials

Each extruder is designed specifically for a matching material type. One is for ABS and other high temperature filaments, one for lower temperature filaments such as PLA, and the other is for TPU, a flexible polyurethane.

### Double-Sided Interchangeable Build Plates

A first for Tiertime, the Glass surface provides a consistent, flat base, ensuring a smooth model underside, desirable for printing without a raft. This new print board design allows for easier print job removal due to its rigidity.



## Dual Filtration System

Improving upon Tiertime's first-in-class air filtration, the UP300's advanced filtration system has a higher airflow capacity capable of maintaining minimal UFP and VOC density inside the printer's large enclosure.



## Specifications

Printing Technology	MEM (Melted Extrusion Modeling)
Extruder	Single
Nozzle Diameter	0.2 mm, 0.4 mm, 0.6 mm
Extruder Maximum Temperature	299°C
Extruder Maximum Travel Speed	200 mm/sec
XYZ Accuracy	2, 2, 0.5 micron
Connectivity	USB cable, Wi-Fi, LAN and USB Stick
Touch Screen	7" Full Colored LCD Screen
Build Volume	205 x 255 x 225 mm (8.7" x 10" x 8.8") (XYZ)
Printed Object Accuracy	±0.1 mm/ 100 mm
Calibration and Leveling	Automatic
Layer Resolution	0.05/0.1/0.15/0.2/0.25 /0.3/0.35/0.4 mm
Print Surface	Perf Glass or Flex Glass, Heated
Dual Filtration System	HEPA and Activated Carbon Filters
Pause to Change Filament Type	Yes
Filament	UP Fila ABS, ABS+, PLA, TPU and more
Filament Diameter	1.75 mm
Tiertime Print Queue	Yes
Filament Spool Compatibility	500 - 1000 g
Extra USB Input for Add-on	5 V, 1 A
Compatible for 3rd Party Materials	Yes

## Software

Software	UP Studio
Supported OS	Windows 7 SP1 or later Mac OS X, iOS 8.x/9.x
Importable File Formats	up3, .ups, .stl, .obj, .3mf, .ply, .off, .3ds, .gcode
Preview Support Structures	Yes
Editable Support Structures	Yes
Cloud Based Print Settings	Yes

## Dimensions

Machine Dimensions	500 x 523 x 460 mm (19.6" x 20.5" x 18.1")
Net Weight	30 kg

## Environment

Operating Ambient Temperatures	15 - 30°C, 20 - 70% RH non
--------------------------------	----------------------------

## Requirements

Power Input	110-240 VAC, 50-60 Hz, 220 W
-------------	------------------------------



Tiertime

sales department:

[sales@tiertime.net](mailto:sales@tiertime.net)

technical support:

[support@tiertime.com](mailto:support@tiertime.com)

more info at:

[www.tiertime.com](http://www.tiertime.com)



Follow [@tiertime](https://www.instagram.com/tiertime) on Instagram

Share your prints [#Tiertime](https://www.instagram.com/explore/tags/tiertime)

Tiertime Corporation  
1765 Landess Ave. #338  
Milpitas, CA 95035, USA

Tel: +1 888 288 6124